

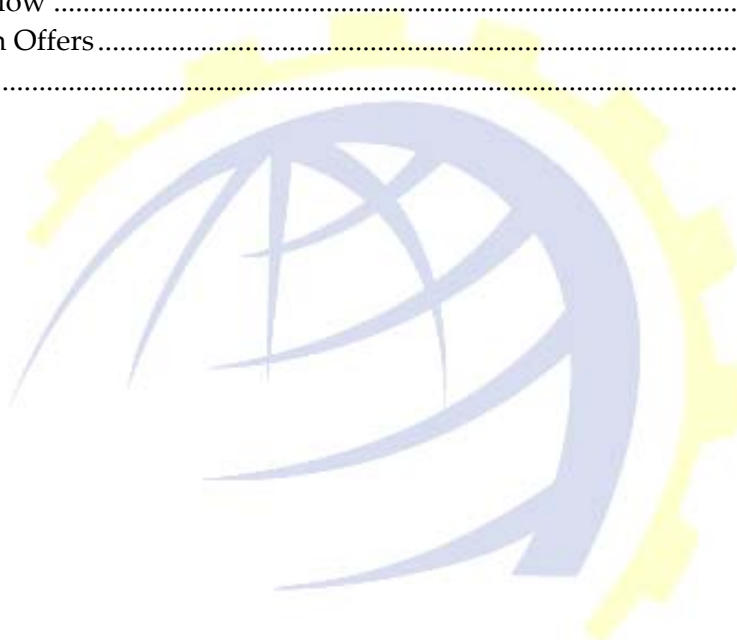


HOSTING CONTROLLER

CUSTOMIZABLE AUTO SIGNUP *User Manual*

Contents

Proprietary Notice	3
Document Conventions	3
Target Audience	3
Introduction.....	4
About HC	4
About Customizable Auto Signup	4
Why You Need Customizable Auto Signup?.....	4
Auto Signup Customization & Deployment	5
Steps to Follow	5
Customization Offers	8
Contact Us	9





Proprietary Notice

© 2010 Hosting Controller. All Rights Reserved.

This document is the property of, and contains proprietary information of Hosting Controller. No part of this document may be reproduced or transmitted in any form or by any means, electronic or mechanical, including photocopying or recording, for any purpose other than consideration of the technical contents without the written acquiescence of a duly authorized representative of Hosting Controller.

Document Conventions

TERMS/ SYMBOLS	WHAT THEY MEAN?
BOLD	The 'Bold & UPPERCASE' text is used to highlight vital terms in the document.
	This symbol is used as a sign for NOTE. It reminds about certain noteworthy steps or takes your attention towards the significant tasks to be done or gives additional information for your ease.
	This symbol is used as a sign for WARNING. It highlights some steps that cannot be skipped or should be followed as stated to avoid errors and confusion.

Target Audience

This document is intended for all the **Host Administrators**, who need detailed information about **Customizable Auto Signup** from HC. It explains all the steps that are required in customization in a comprehensive manner. You must read this manual before configuring the **Auto Signup** as per your requirements.



It is to notify that if you do not possess knowledge of etiquette development/resources then it is recommended for you to use the existing signup.

Introduction

About HC

It enables web hosting companies to manage all their servers both Windows & Linux through centralized interface. You can add multiple mail servers within a cluster and offer MS-Exchange & SharePoint hosting. You can expand your business with **HC**, from one server to cluster of servers. It allows you to add new clusters as per your requirements.

About Customizable Auto Signup

The **Customizable Auto Signup** is an open source application that provides a way to write complete auto signup application using **HC API**. It is provided with the source code so that you may customize it according to your requirements and get a clear understanding of how it works.

Why You Need Customizable Auto Signup?

Being hosts you need to have an absolute auto signup that accomplishes all your requirements in an effective manner. Although the existing **HC** signup offers extreme flexibility but you may need more to gratify your users (Resellers/Webadmins).

Previously, you are given multiple auto signup themes, controls and different behavior of these controls to be managed as required. Now you are not limited to these only. You can now modify the source code and create your own auto signup application as per your requirements.

Auto Signup Customization & Deployment

To configure sample **Auto Signup**, you need to follow these steps.



*In order to setup the **Auto Signup**, you need Visual Studio 2005 or later.*



Follow the steps as stated, to omit faults and errors.

Steps to Follow

1. Download the **Auto Signup** and extract the files



*You can download the open source **Auto Signup** from:*

<http://hostingcontroller.com/English/Downloads/Utilities/SampleAutoSignup.zip>

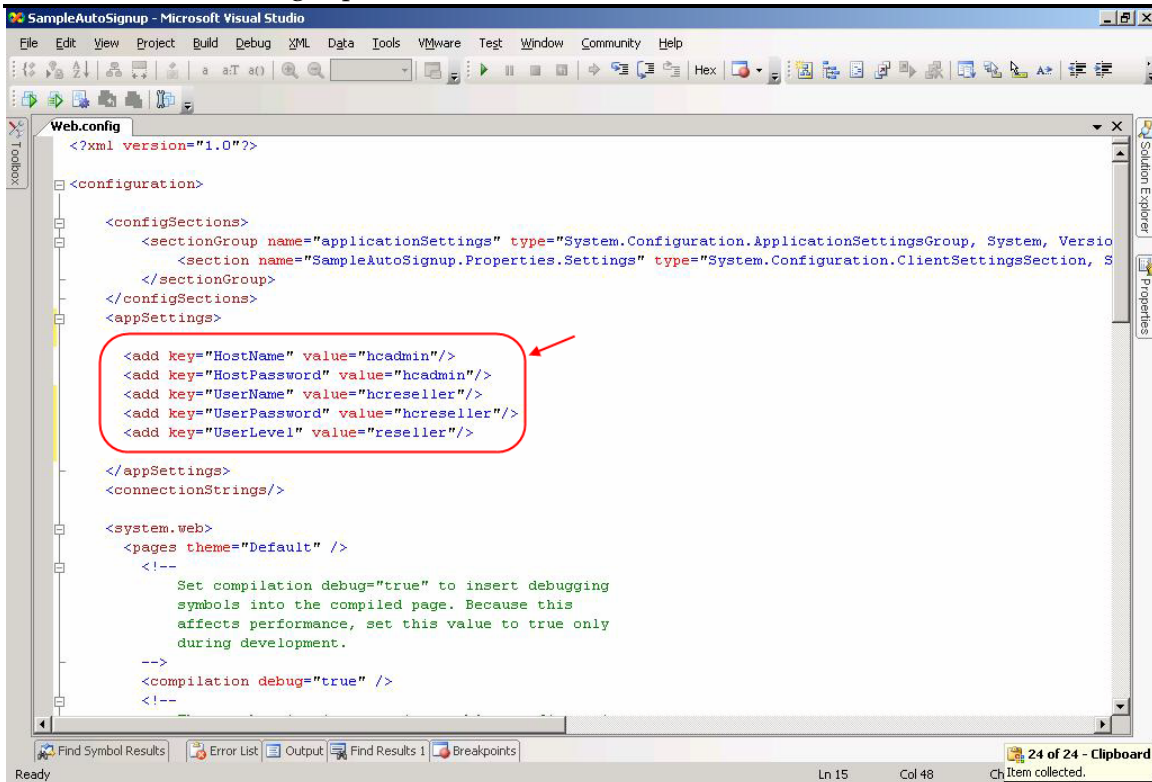
2. Open the project file.



*Make sure, you don't change **HC API Call**. Otherwise the **Auto Signup** may not function properly.*

3. Configure the following key values in the **web.config** file

Customizable Auto Signup



```
<?xml version="1.0"?>
<configuration>
  <configSections>
    <sectionGroup name="applicationSettings" type="System.Configuration.ApplicationSettingsGroup, System, Version=4.0.0.0, Culture=neutral, PublicKeyToken=b77a5c561934e089">
      <section name="SampleAutoSignup.Properties.Settings" type="System.Configuration.ClientSettingsSection, System.Configuration, Version=4.0.0.0, Culture=neutral, PublicKeyToken=b77a5c561934e089"/>
    </sectionGroup>
  </configSections>
  <appSettings>
    <add key="HostName" value="hcadmin"/>
    <add key="HostPassword" value="hcadmin"/>
    <add key="UserName" value="hcre seller"/>
    <add key="UserPassword" value="hcre seller"/>
    <add key="UserLevel" value="reseller"/>
  </appSettings>
  <connectionStrings/>
  <system.web>
    <pages theme="Default" />
    <!--
      Set compilation debug="true" to insert debugging
      symbols into the compiled page. Because this
      affects performance, set this value to true only
      during development.
    -->
    <compilation debug="true" />
  </system.web>
</configuration>
```

- HostName : It is the host administrator of **HC Panel**.
- HostPassword : It is the password of the host of **HC Panel**.
- UserName : It is the user name for whom the signup is being setup (It must be **HC Host/Reseller's Name**).
- UserPassword : It is the password of the user for whom the signup is being setup.
- UserLevel : It is the level of the user for whom the signup is being setup. It can either be "**Host**" or "**Reseller**".



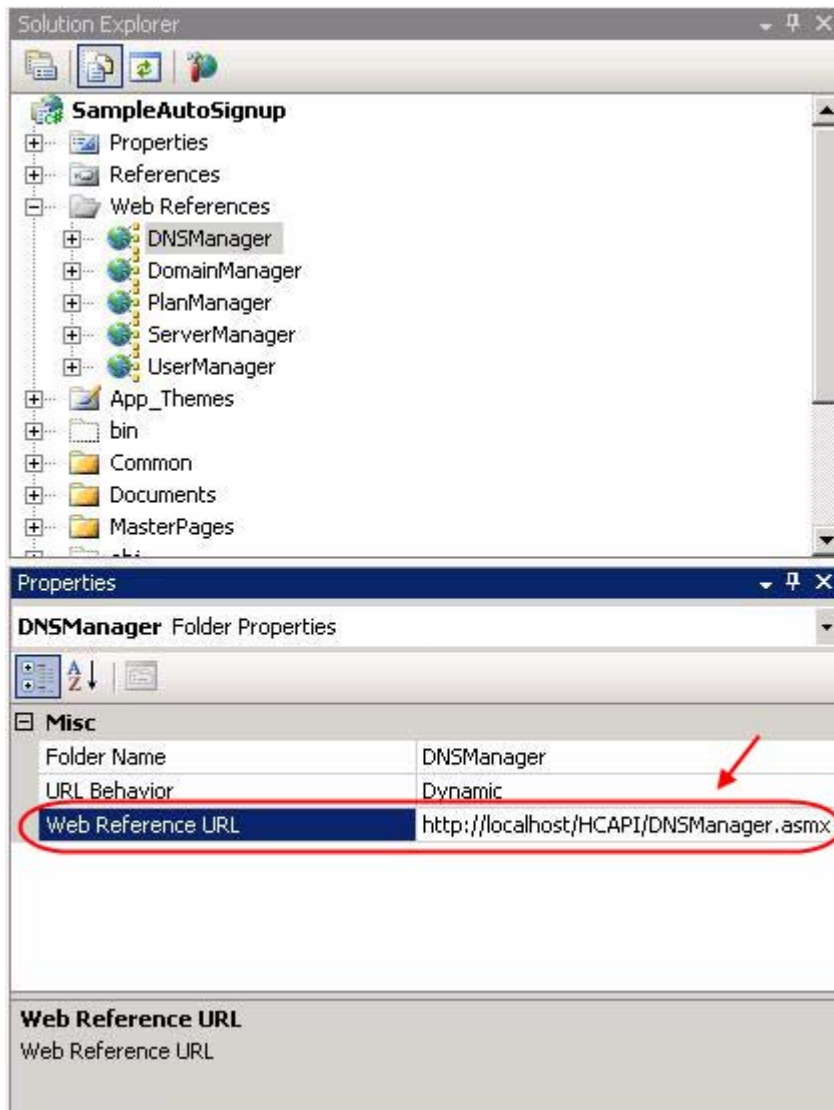
*If you are setting the **Auto Signup** for yourself then the **HostName**, **UserName** and **Passwords** should be same.*

- Configure **HC API**, if it has not been already configured.
- Update all the web references in the sample output **Auto Signup** project. These web references should direct towards the corresponding web services of the **API**:

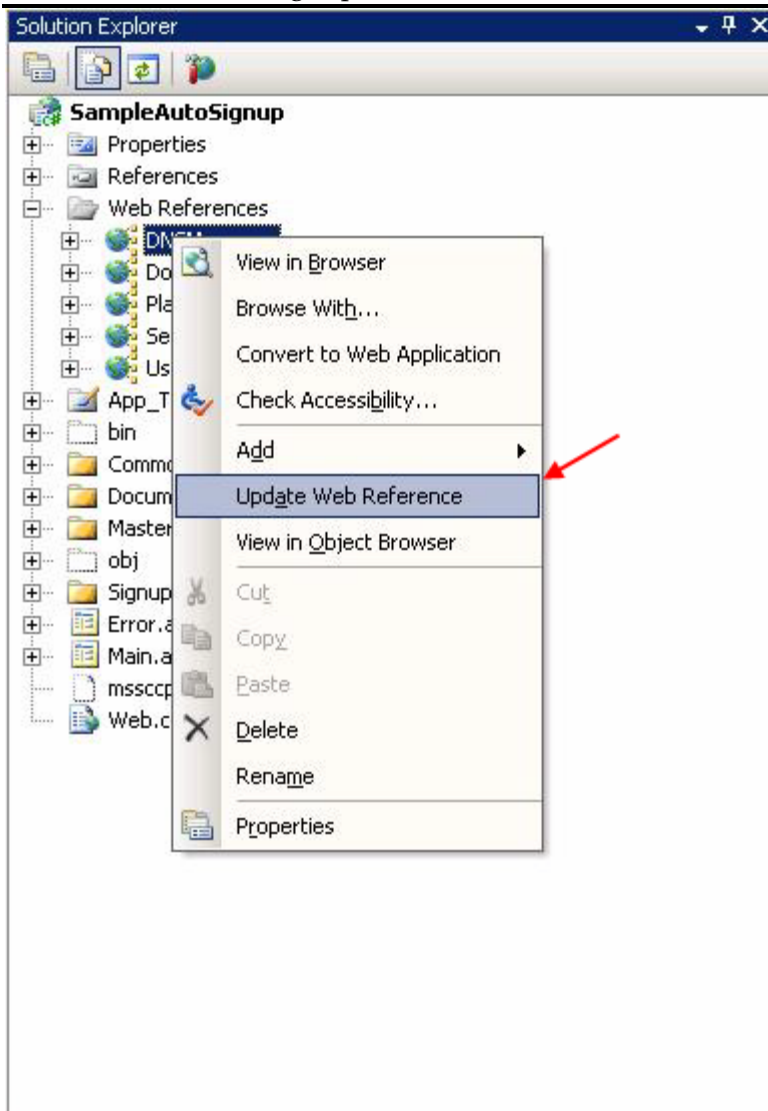
- Server Manager

Customizable Auto Signup

- b. User Manager
- c. Plan Manager
- d. Domain Manager
- e. DNS Manager



Customizable Auto Signup



*If the **Auto Signup** is not configured properly then it displays an error page. You can also debug to find the problem.*

That's it! The **Auto Signup** is deployed.

Customization Offers

You can customize the signup as per your requirements in as easy and effective manner. With the open source **Auto Signup**, you can:

- ✓ Change Application Themes
- ✓ Modify Redirections
- ✓ Add New Pages

Customizable Auto Signup

- ✓ Integrate with Other Applications
- ✓ Add/Remove Restrictions
- ✓ Configure Settings, Independent of **HC** panel
- ✓ Take the Key Values from Some Other Source (Currently It is from web.config File)

You are not limited to these operations; **HC Customizable Auto Signup** offers many more as you have the source code. Therefore, you can customize your **Auto Signup** just as per your requirements with few clicks.

Contact Us

In case of any ambiguity/query regarding **Auto Signup** configuration, please feel free to contact us at support@hostingcontroller.com

