



[www.hostingcontroller.com](http://www.hostingcontroller.com)

A Cloud Automation Solution

## HC10 Configuration with SharePoint

## Proprietary Notice

This document is the property of, and contains proprietary information of Hosting Controller. No part of this document may be reproduced or transmitted in any form or by any means, electronic or mechanical, including photocopying or recording, for any purpose other than consideration of the technical contents without the written acquiescence of a duly authorized representative of Hosting Controller.

© 2017 Hosting Controller. All Rights Reserved.

## Contents

Proprietary Notice .....	2
1) Introduction .....	4
2) System Requirements.....	4
2.1) Minimum System Requirements for SharePoint 2016 .....	4
2.2) Minimum System Requirements for SharePoint 2013 .....	4
3) Setting up SharePoint for Hosting Controller .....	5
4) Minimum System Requirements for Hosting Controller .....	5
5) Hosting Controller SharePoint Deployment Scenario.....	5
6) Installing Hosting Controller .....	6
7) Understanding HC10 User Structure .....	7
8) Configuring the Panel .....	7
Contact Us .....	10

## 1) Introduction

SharePoint is Microsoft's revolutionary content management system. It enables groups to setup a centralized and password protected space for document sharing. Having appropriate permissions users can have a go at storing, downloading and editing documents with profound ease.

HC SharePoint automation allows end-to-end automation and management of Microsoft SharePoint Server enabling web based creation of SharePoint sites, sub sites, users, groups and convenient segregation of SharePoint users into separate containers. In short, it provides an out of the box interface to Microsoft's most popular collaboration technology.

HC10 SharePoint automation supports the following versions:

- SharePoint 2016
- SharePoint 2013
- SharePoint Foundation 2013

However this article provides the best practices for configuring and using HC10 with SharePoint 2016 and 2013.

## 2) System Requirements

### 2.1) Minimum System Requirements for SharePoint 2016

SharePoint 2016 allows for two installation scenarios. Server farm with a single server in the farm and server farm with multiple servers in the farm. HC10 supports both scenarios. System requirements for SharePoint 2016 can be viewed at:

[https://msdn.microsoft.com/en-us/library/cc262749\(v=office.16\).aspx](https://msdn.microsoft.com/en-us/library/cc262749(v=office.16).aspx)

### 2.2) Minimum System Requirements for SharePoint 2013

SharePoint 2013 offers several installation scenarios. These include Standalone Install, single-server farm installations and multiple-server farm installations. However Hosting Controller supports only single-server and multiple-server farm installations. Standalone Install is not supported. The minimum Hardware and Software requirements for setting up single-server or multiple-server farms can be viewed at:

<https://technet.microsoft.com/en-us/library/cc262749.aspx>

### 3) Setting up SharePoint for Hosting Controller

A few important considerations are to be taken into account before commencing SharePoint installation. These form the crux of Hosting Controller's integration with SharePoint and are necessary for a seamless working:

- Hosting Controller does not support a Standalone installation of SharePoint. In order to make it work with Hosting Controller, the SharePoint server should essentially be part of an Active Directory (A.D.) domain. The server must join an A.D. domain before a SharePoint install.
- Windows internal database (MSDE) should not be used for SharePoint installation. The use of SQL Server is recommended instead.
- Both SharePoint and SQL Server installations should be made via the same **domain\administrator** account. An installation performed via a local system account may confront access denied errors.
- This **domain\administrator** should have permissions over both SharePoint and SQL with SharePoint user and site creation privileges.

### 4) Minimum System Requirements for Hosting Controller

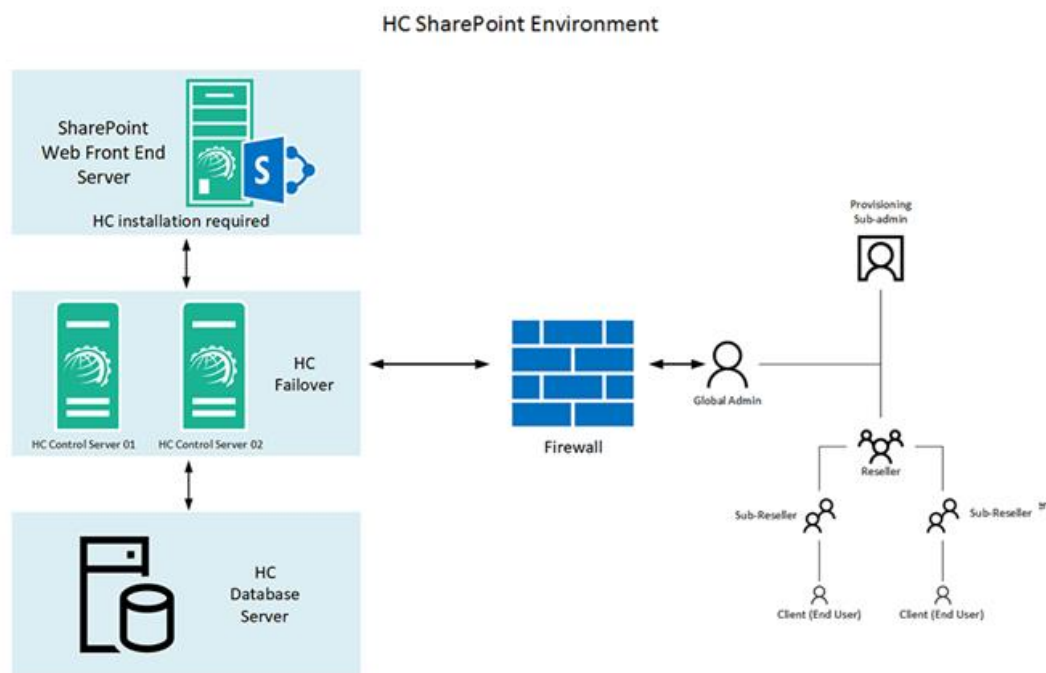
Once your SharePoint Servers are ready it's time to install Hosting Controller. MSSQL is the major pre-requisite for storing Hosting Controller backend database. The other minimum Software and Hardware requirements for installing HC10 can be viewed below:

[http://help.hostingcontroller.com/hc10/default.aspx#pageid=system\\_requirements](http://help.hostingcontroller.com/hc10/default.aspx#pageid=system_requirements)

### 5) Hosting Controller SharePoint Deployment Scenario

HC10 should be installed on the SharePoint Web Front End server (WFE). A single-server farm cannot have more than one SharePoint servers in the farm whereas a multiple-server farm can have more than one SharePoint servers. As there is only one server in a single-server farm, it by default will host HC installation however in a multiple-server farm HC should be installed on servers with the Front End Web role.

The HC10 Control Server communicates directly with the SharePoint Web Front End servers to provision SharePoint sites and users.



**NOTE:** The Standalone Install mode is no longer available in SharePoint 2016. The Single-Server Farm role replaces the Standalone Install mode available in previous SharePoint releases. Unlike Standalone Install, the SharePoint administrator must separately install and prepare Microsoft SQL Server for SharePoint.

## 6) Installing Hosting Controller

Download the Agent installer from the following link:

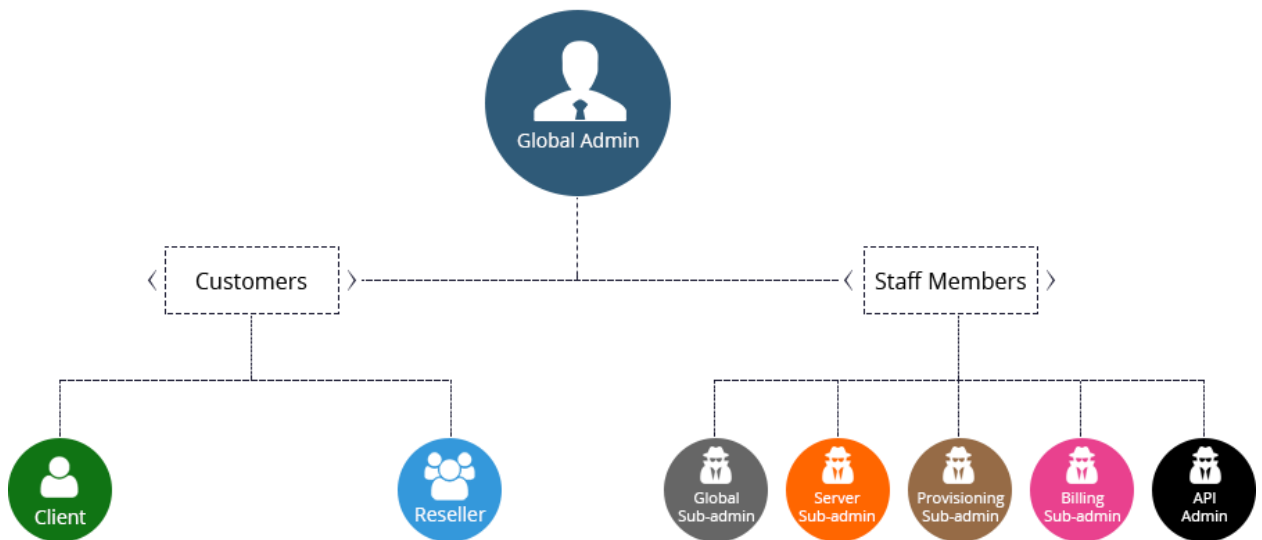
<http://hostingcontroller.com/Hosting-Software-Downloads/Windows-HostingAutomation.html>

and apply it on the SharePoint Web Front End. The installation itself is fairly simple. It permits a setup wizard to run and allows users to follow a step by step installation procedure. The HC10 Control Server will then communicate with this SharePoint Web Front End to provision SharePoint sites and users.

Later section of the document explains HC10 Agent installation process in detail.

## 7) Understanding HC10 User Structure

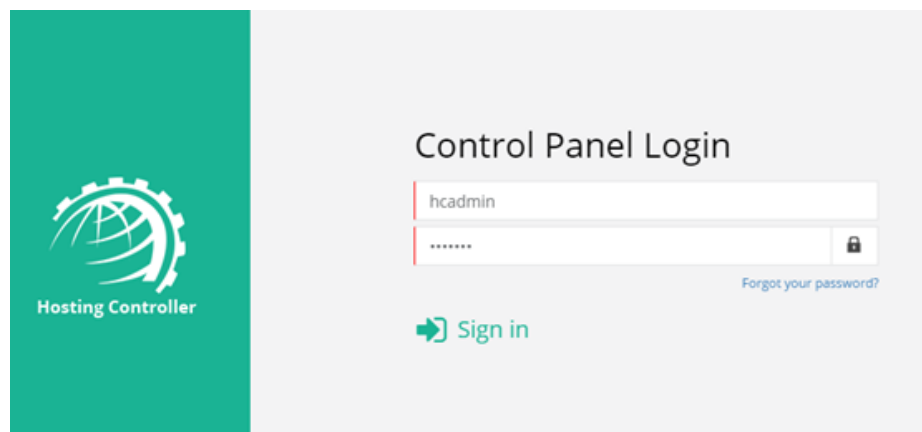
Unlike previously, HC10 is no more limited to just three tiers. It extends support to an N-tier user architecture complete with the management and control of Admins, Resellers, Sub-Resellers and Clients. The Resellers can further have Sub-Resellers beneath them and this chain can extend all the way down to the nth level. HC10 also holds the provision for horizontal Staff Members. These Staff Members represent various departments within an organization. Hosting Controller allows the delegation of administrative tasks to these relevant departments within a single organization. Every Staff Member is confined to his own set of rights and privileges and may not overstep his authority. Staff Members are distinct from Customers and have their own interfaces.




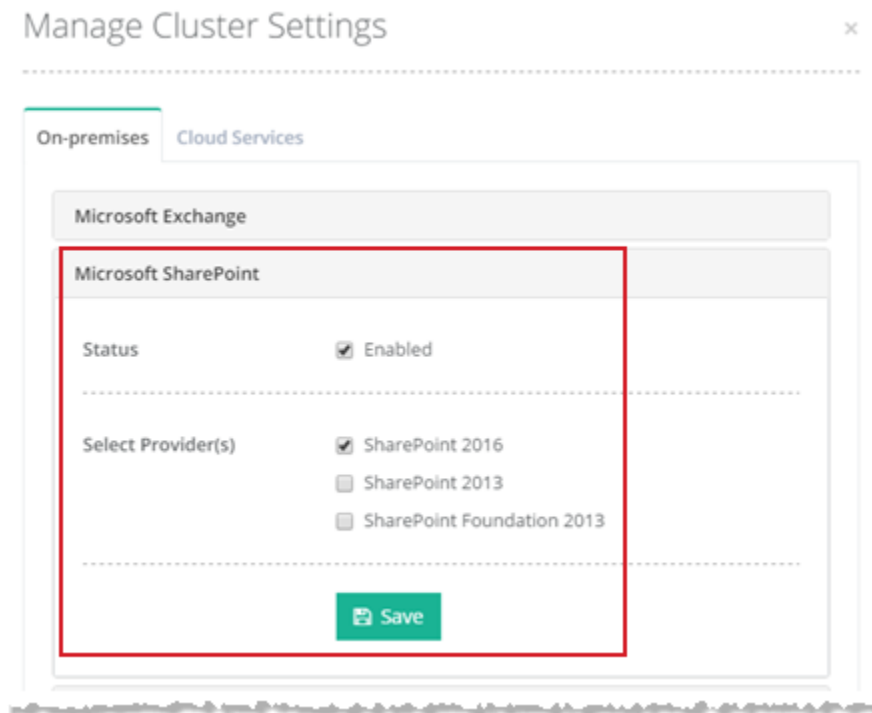
## 8) Configuring the Panel

To configure the panel follow the steps as stated for quick and easy SharePoint server configuration:

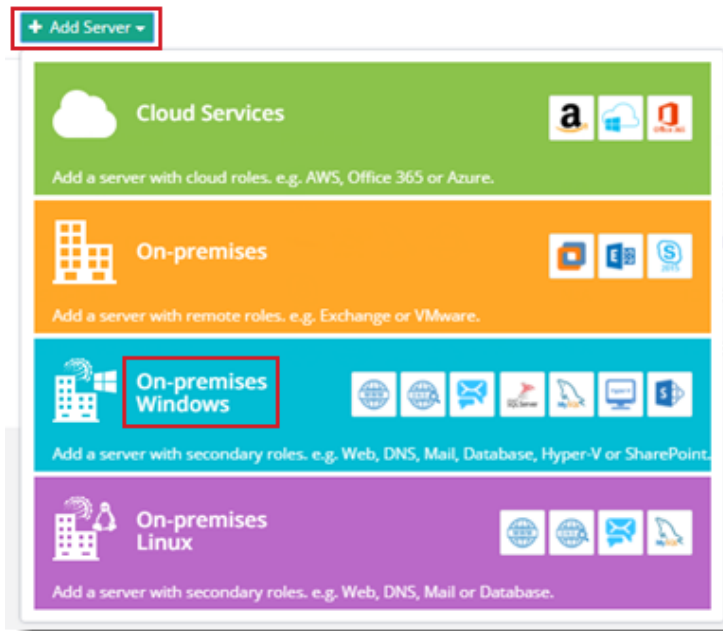
1. Log on to HC10 panel as an administrator.



- To enable SharePoint server, click  at top right corner of HC10 panel and then go to the **Server Manager >> Cluster Settings**. Under **On-premises** tab and **Microsoft SharePoint** section, select **Enabled** checkbox. It enables the SharePoint server. Select provider(s) as required and click **Save** to proceed.



- To add a friendly server to the cluster, go to the **Server Manager >> Servers**. Click **Add Server >> On-premises Windows** to proceed.





- Specify a friendly name and IP of the SharePoint Web Front End server. The credentials here are for a **domain\administrator** user. Under **Server Role(s) in Cluster** section, select role as SharePoint Server. Verify the connection.

**Add Server (On-premises Windows)**

---

**General Information**

Server's Friendly Name:

IP Address:

Admin User:

Password:

**Server Role(s) in Cluster**

Select Server Role

- SharePoint Server
- Web Server
- DNS Server
- Mail Server
- Database Server

---

- HC automatically extracts information from SharePoint server that can easily be modified later.

### Add Server x

---

**SharePoint Server**

#### General Settings

Select Provider: SharePoint 2016

Default Web Application: SharePoint - 8000

Web Application URL: http://sps2016:8000/

#### Domain Controller Details

Domain Controller: example.ad.com

Domain Admin: domain\administrator

Password: \*\* 🔒

🔍 Check Connectivity

Root Organizational Unit: OU=HC10,DC=ad16,DC=com Browse

---

💾 Save
🚫 Cancel

6. SharePoint server is configured and ready to use.

Manage Servers Server Manager / Servers

Search Server by Friendly Name 🔍

---

+ Add Server

Friendly Name	Providers	SSUP Date	Build No.	Status	License Status	Actions
Exchange-1.12		N/A	10.1.3.23172	Running	DEMO (23 days to expire)	Edit   Activate License
SharePoint Server		N/A	10.1.3.23172	Running	DEMO (30 days to expire)	Edit   Activate License
SHM (192.168.1.31)		N/A	10.1.3.23172	Running	DEMO (23 days to expire)	Edit   Activate License

1 - 5 of 5

## Contact Us

In case of any ambiguity/query regarding HC10 configuration with SharePoint, please feel free to contact us at [support@hostingcontroller.com](mailto:support@hostingcontroller.com).