

Hosting Controller Configuration with Exchange



Proprietary Notice

This document is the property of, and contains proprietary information of Hosting Controller. No part of this document may be reproduced or transmitted in any form or by any means, electronic or mechanical, including photocopying or recording, for any purpose other than consideration of the technical contents without the written acquiescence of a duly authorized representative of Hosting Controller.

© 2025 Hosting Controller. All Rights Reserved.

Contents

Proprietary Notice	1
1) Introduction	3
2) Minimum System Requirements for Exchange	3
3) Integration of Exchange with Hosting Controller	3
4) Control Server	3
5) Minimum System Requirements for Hosting Controller	4
6) Installing Hosting Controller	4
7) Configurations required on Exchange server to connect with Hosting Controller	5
7.1) Enabling Remote Power Shell.....	5
7.2) Domain Admin User.....	6
8) Understanding Hosting Controller User Structure	6
9) Configuring the Panel	7
Contact Us.....	11

1) Introduction

Hosting Controller Exchange module is tightly integrated with Microsoft Exchange Server to ensure provisioning of all the required features for service providers and enterprises to deploy and manage Exchange over any type of infrastructure.

This article provides information regarding the minimum system requirements for installing Exchange and configuring it with Hosting Controller. In addition, it comprehensively lists steps to install Hosting Controller, its user hierarchy, and all required configurations for provisioning Exchange.

2) Minimum System Requirements for Exchange

Hosting Controller is your one-stop shop for efficient management of Exchange. It not only allows service providers and enterprises to manage their Exchange offerings under one roof but also lets them segregate their tenants into compact containers. Hosting Controller supports Microsoft Exchange Server SE, 2019, 2016, and 2013. This section provides a clear picture of exactly what you need to set up your Exchange servers. If you are new to Exchange, please view the following link to have a better understanding of its system requirements:

<https://docs.microsoft.com/en-us/exchange/plan-and-deploy/system-requirements?view=exchserver-2019>

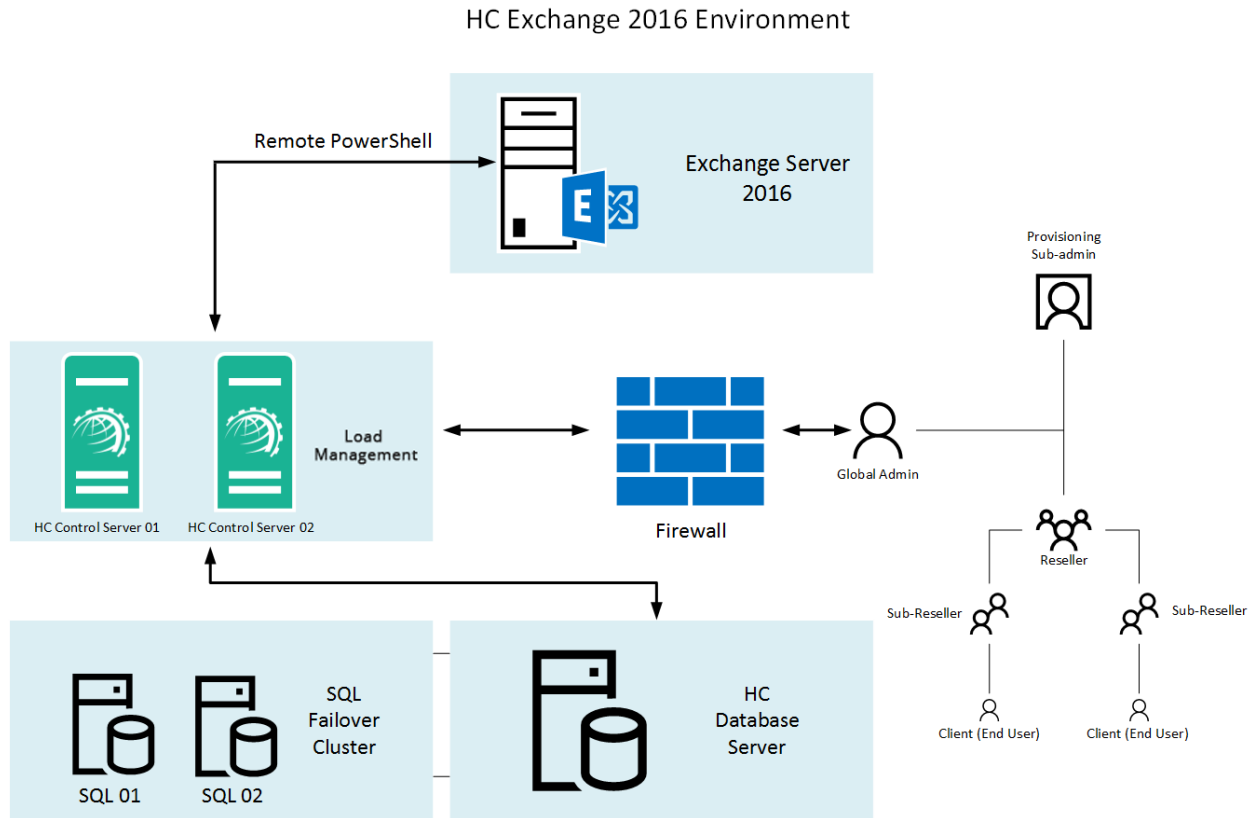
3) Integration of Exchange with Hosting Controller

Hosting Controller provides synergic integration of the Exchange Server. Besides taking advantage of a wide array of inbuilt communication features, it adeptly presents a multi-tiered; web based provisioning solution to service providers and enterprises. Though emphasis still remains on segregation of tenants and curtailing of the total cost of infrastructure ownership, Hosting Controller's automation for Exchange encourages Remote Management.

The Exchange Remote Management feature necessitates Exchange servers independent of a Hosting Controller software installation and ensures communication only through remote PowerShell commands. This implementation provides the benefit of a completely clean and isolated Exchange infrastructure, without the unnecessary burden of extra software.

4) Control Server

Control Server is the server on which Hosting Controller is installed, and this Control Server in turn communicates with the actual Exchange servers via remote PowerShell. The Control Server carries the HC Primary installer and constitutes the backbone of HC. It's responsible for provisioning, database, system, and task scheduler operations.



5) Minimum System Requirements for Hosting Controller

Once your Exchange Servers are ready, it's time to install Hosting Controller on the Control Server. Microsoft SQL Server is the major pre-requisite for storing Hosting Controller backend database, and for its frontend, IIS webserver coupled with Microsoft .NET Framework 4.6 or above is required. For further information regarding Hosting Controller's prerequisites, refer to the link below:

<http://hostingcontroller.com/Hosting-Control-Panel-Software/Web-Hosting-Automation/Requirements-Windows-Linux-Hosting.html>

6) Installing Hosting Controller

Download the Primary installer from the following link:

<http://hostingcontroller.com/Hosting-Software-Downloads/Windows-Hosting-Automation.html>

Then apply it to your Control Server. The installation itself is fairly simple. It permits a setup wizard to run and allows users to follow a step-by-step installation procedure. As stated previously, HC should only be installed on the Control Server.

No installation is required on the Exchange servers, and the Control Server will communicate with Exchange servers through remote PowerShell commands. This not only

makes the communication simple but also reduces the overhead of software installation on Exchange itself. It also reduces the cost for multiple servers' setup as you can manage Exchange via only one machine.

HC installation guide and pre-configurations required for setting it up with SQL and IIS can be viewed below:

<https://docs.hostingcontroller.com/Products/HC-v.10/Installation-Guide/Installation-Guide-For-Windows>

7) Configurations required on Exchange server to connect with Hosting Controller

There are certain after-install configurations required on the Exchange server as well. They form a vital part of the process and should positively be performed in order to run HC successfully with Exchange. The following are the configurations to be performed:

7.1) Enabling Remote Power Shell

As per Microsoft recommendations Hosting Controller communicates with Exchange via Remote PowerShell. PS Remoting should be enabled on the Exchange CAS server (in case of 2013) and MBX server (in case of 2016).

Follow the steps to enable Remote PowerShell as:

1. Run **Enable-PSRemoting** command in Exchange Management Shell.
2. Enable **BASIC authentication** on Exchange PowerShell virtual directory in the IIS Manager under Default Web Site.
3. Ensure that the user providing its credentials has "Remote PowerShell" enabled

a. `get-user userName |fl RemotePowerShellEnabled`

PS: userName = replace it with actual user name i.e. Administrator.

If above cmd shows RemotePowerShellEnabled as False then execute below command.

b. `set-user Administrator -RemotePowerShellEnabled $True`

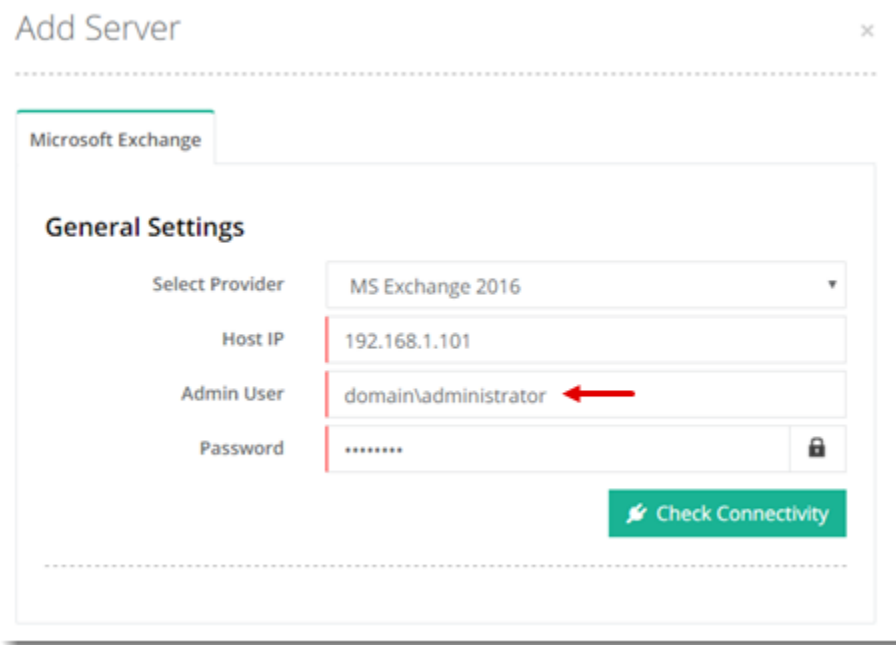
4. Winrm ports 5985, 5986 and 443 must be open in firewall for connections over HTTP and HTTPS.
5. If HC Portal is installed on Windows Server 2019 operating system, then HC Provisioning Service should run under local Administrator account. To perform this change, follow the steps mentioned below:

- Click on **Start >> Run >> services.msc**.
- Select HC Provisioning Service

- Click on properties and then specify the credentials of local administrator account of Windows Server 2019 machine under Log On tab.

7.2) Domain Admin User

Any privileged user having rights to communicate with Exchange remotely over PowerShell must be specified in HC panel in order to establish a valid connection between the HC and Exchange machines. You can specify Domain Admin or any other privileged user credentials as shown in the screenshot below:

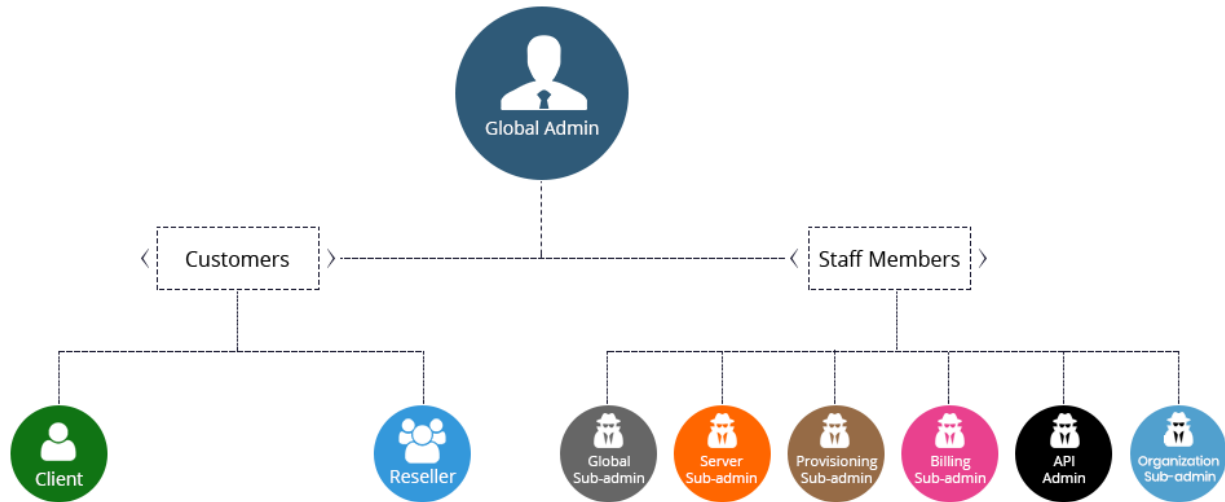


The screenshot shows a dialog box titled "Add Server" with a close button (X) in the top right corner. Below the title bar is a dashed line. The main content area is titled "Microsoft Exchange" and contains a "General Settings" section. This section includes four input fields: "Select Provider" (a dropdown menu showing "MS Exchange 2016"), "Host IP" (text input with "192.168.1.101"), "Admin User" (text input with "domain\administrator" and a red arrow pointing to the text), and "Password" (password input field with asterisks and a lock icon). At the bottom right of the settings area is a green button labeled "Check Connectivity". A dashed line is at the bottom of the dialog box.

8) Understanding Hosting Controller User Structure

Unlike the previous versions, HC10 is no longer limited to just three tiers. It extends support to an N-tier user architecture complete with the management and control of Admins, Resellers, Sub-Resellers, and Clients. The Resellers can further have Sub-Resellers beneath them, and this chain can extend all the way down to the nth level.

HC10 also holds the provision for horizontal Staff Members. These Staff Members represent various departments within an organization. Hosting Controller allows the delegation of administrative tasks to these relevant departments within a single organization. Every Staff Member is confined to its own set of rights and privileges and cannot overstep its authority. Staff Members are distinct from Customers and have their own interfaces.

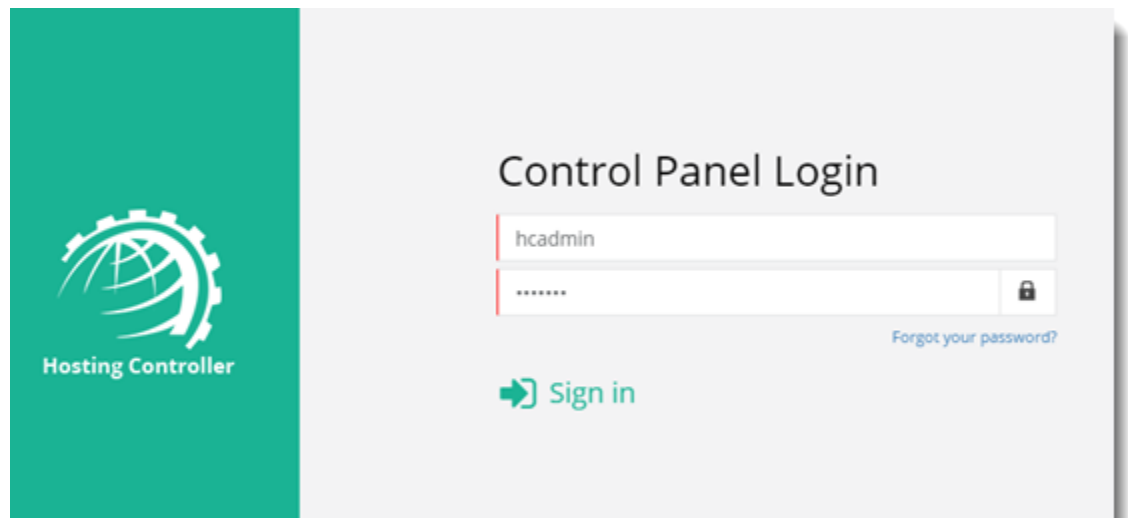



NOTE: In HC10, all the levels including Global Admin can add Hosted Organizations (O.U.), Mail Domains and Mailboxes etc.

9)Configuring the Panel

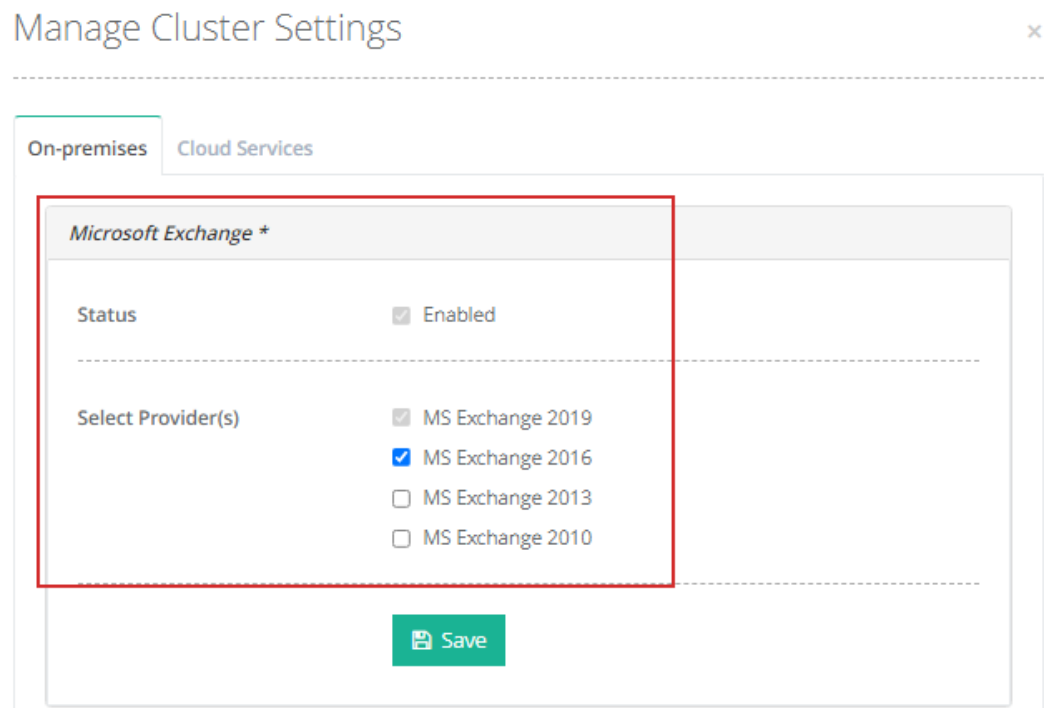
To configure the panel follow the steps as stated for quick and easy Exchange server configuration:

1. Log on to HC panel as an administrator.



2. To enable Exchange server, click  at top right corner of HC panel and then go to the **Server Manager >> Cluster Settings**. Under **On-premises** tab and **Microsoft**

Exchange section, select **Enabled** checkbox. It enables the Exchange server. Select Provider(s) as required and click **Save** to proceed.



Manage Cluster Settings ×


On-premises Cloud Services

Microsoft Exchange *

Status Enabled

Select Provider(s)

- MS Exchange 2019
- MS Exchange 2016
- MS Exchange 2013
- MS Exchange 2010

 Save

- To add a friendly server to the cluster, go to the **Server Manager >> Servers**. Click **Add Server >> On-premises** and specify required information to proceed.

Manage Servers

Server Manager / Servers

+ Add Server

Cloud Services

Add a server with cloud roles. e.g. AWS, Office 365 or Azure.

On-premises

Add a server with remote roles. e.g. Exchange or VMware.

On-premises Windows

Add a server with secondary roles. e.g. Web, DNS, Mail, Database, Hyper-V or SharePoint.

Add Server

General Information

Server's Friendly Name

Server Role(s) in Cluster

Select Server Role Microsoft Exchange

Add Server & Configure >

NOTE: This is a hypothetical server with a Friendly Name, without any physical existence. It only serves as an identifier in the panel. In reality the Control Server communicates with the actual Exchange server directly via Remote PowerShell.

- Specify IP of the actual Exchange server and credentials for a **domain\administrator** user. Then verify the connection.

Add Server

Microsoft Exchange

General Settings

Select Provider: MS Exchange 2016

Host IP: 192.168.1.101

Admin User: domain\administrator

Password:

Check Connectivity

- HC automatically extracts information from Exchange server that can easily be modified later.

Check Connectivity

Mailbox Server Details

EXG2016 (52.34.227.20)

Database Selection Mode

Database Selection: Manual Automatic

Client Access Server Details

Client Access Server: EXG2016

OWA Access URL: https://192.168.1.101/OWA

Domain Controller Details

Domain Controller: DC.ad16.com

Domain Admin: domain\administrator

Password:

Check Connectivity

Root Organizational Unit: OU=Hosting,DC=ad16,DC=com Browse


Save Cancel

- Exchange server is configured and ready to use.

Manage Servers
Server Manager / Servers

Search Server by Friendly Name

+ Add Server

Friendly Name	Providers	SSUP Date	Build No.	Status	License Status	Actions
Exchange Server 2016			10.0.15.22356	Running	DEMO (30 days to expire)	Edit Delete

Contact Us

In case of any ambiguity/query regarding HC configuration with Exchange, please feel free to contact us at support@hostingcontroller.com.